

## AC / DC Thermostat

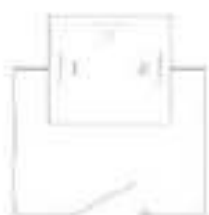
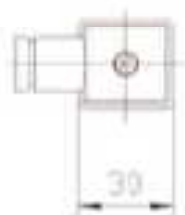
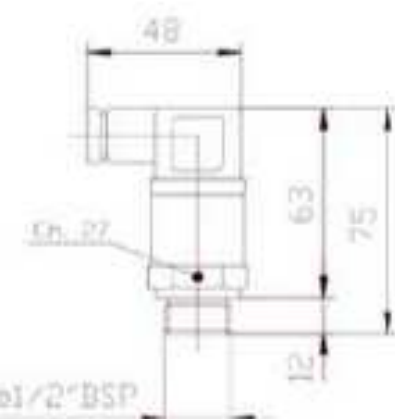
### THERMOSTAT SERIE TM4 Bimetall Thermostat

### THERMO-SWITCH SERIES TM4 Bimetal Thermostat



Die Thermostate der Serie TM4/A1-TM4/C1 öffnen oder schließen den Kontakt zum Lüfter wenn das zu kühlende Medium die gewünschte Temperatur erreicht hat. Durch das spezielle Design des Thermostat Körpers kann es um 90° gedreht werden.

The thermo-switches TM4/A1-TM4/C1 series allow the closing or the opening of an electrical contact when the fluid temperature exceeds the set-point value of the thermo-switch. The special design of the body thermo-switch enables a 90° rotation compared to the main power supply connection.



| TECHNISCHE DATEN                         | TECHNICAL FEATURES                       |
|--|--|
| Temperaturbereich : -20°C bis 120°C      | Working temperature : -20°C to 120°C     |
| Temperaturabfrage : 20x Minute           | Commutation frequency : 20 cycles/min    |
| Toleranz: +/-3.5°C                       | Switching accuracy : +/-3.5°C            |
| Hysteresis Wert: 12°C                    | Fixed hysteresis value : about 12°C      |
| Material: Messing                        | Body material : brass                    |
| Anschluss: 1/2" BSP (Dichtung inklusive) | Thread connection: 1/2" BSP (seal incl.) |
| Max. Druck : 200 bar                     | Max pressure : 200 bar                   |
| Einbau : jede Position                   | Mounting : in any position               |
| Gewicht : 70 g                           | Weight: 70 gr.                           |
| ELEKTRISCHE DATEN                        | ELECTRIC FEATURES                        |
| Anschluss nach DIN 43650                 | Electric connection accord. DIN 43650    |
| Sicherung nach DIN 40050 IP65            | Electric protect. accord. DIN 40050 IP65 |
| Maximale Kontaktbelastung :              | Maximum contact load :                   |
| AC 220V – 10A                            | AC 220V – 10A                            |
| AC 125V – 15A                            | AC 125V – 15A                            |
| DC 12V – 10A                             | DC 12V – 10A                             |
| DC 24V – 5A                              | DC 24V – 5A                              |
| Modell / Type A1 (normal open)           |  |
| TM44/A1 Temperatur 40°:28°C              | 9819 871 903                             |
| TM45/A1 Temperatur 50°:38°C              | 9819 871 904                             |
| TM46/A1 Temperatur 60°:48°C              | 9819 871 905                             |
| TM47/A1 Temperatur 70°:58°C              | 9819 871 906                             |
| TM48/A1 Temperatur 80°:68°C              | 9819 871 907                             |