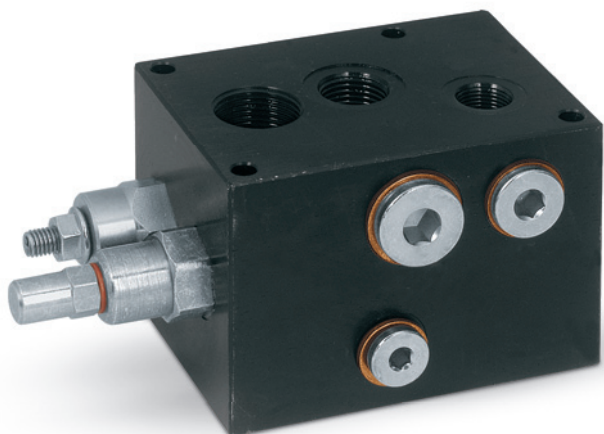


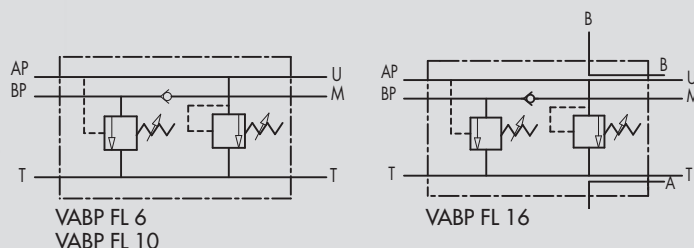
## 10.2 - VALVOLE DI ESCLUSIONE ALTA-BASSA PRESSIONE FLANGIABILI PER PIASTRA NG6-NG10 E NG16

TIPO / TYPE  
VABP

## 10.2 - TWO PUMP "HI-LOW" UNLOADING VALVES FLANGEABLE (BASE NG6-NG10 AND NG16)



SCHEMA IDRAULICO  
HYDRAULIC DIAGRAM



### IMPIEGO:

In un circuito alimentato da due pompe in parallelo, valvola utilizzata per mandare a scarico la pompa di maggior portata al raggiungimento di un determinato valore di taratura. Da questo momento in poi l'attuatore lavora con la pompa di minor portata a pressione maggiore, consumando meno energia. È stata studiata appositamente per la flangiatura diretta all'elettrovalvola.

### MATERIALI E CARATTERISTICHE:

**Corpo:** acciaio zincato

**Componenti interni:** acciaio temprato termicamente e rettificato

**Guarnizioni:** BUNA N standard

**Tenuta:** a cono guidato. Trafilamento trascurabile

### MONTAGGIO:

Fissare la valvola alla centralina collegando BP alla pompa di maggior portata, AP alla pompa di minor portata, T allo scarico e M all'eventuale manometro. Flangiare l'elettrovalvola alla VABP e collegare gli attacchi A e B all'attuatore.

### USE AND OPERATION:

This valve is used in a 2 parallel-working pumps circuit in order to release the excess of the higher flow pump to the tank when this gets the required pressure setting. Since this moment and on the actuator works with the lower flow pumps at higher pressure, consuming less energy. It's ideal for direct flange-mounting on solenoid valves.

### MATERIALS AND FEATURES:

**Body:** zinc-plated steel

**Internal components:** grounded and hardened steel

**Seals:** BUNA N standard

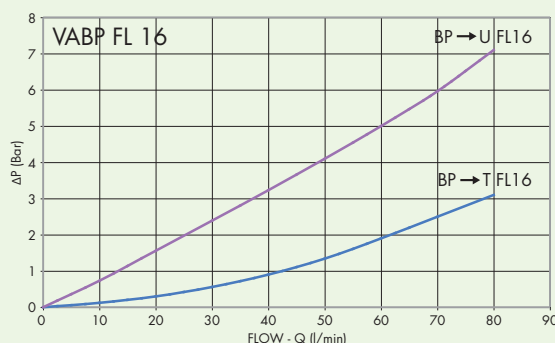
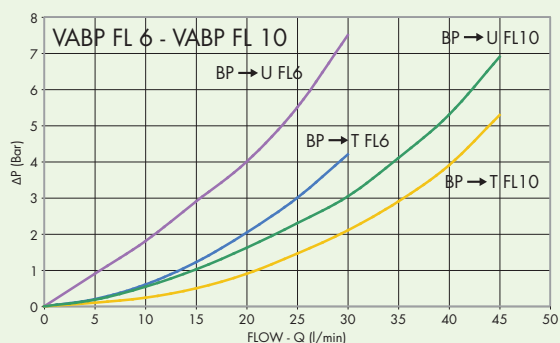
**Tightness:** minor leakage

### APPLICATIONS:

Fix the valve to the pressure flow by connecting BP to the higher flow pump, AP to the lower flow pump, T to the tank and M to the eventual manometer. Flange the solenoid valve to the VABP and connect ports A and B to the actuator.

### PERDITE DI CARICO PRESSURE DROPS CURVE

Temperatura olio: 50°C - Viscosità olio: 30 cSt  
Oil temperature: 50°C - Oil viscosity: 30 cSt



CODICE  
CODE

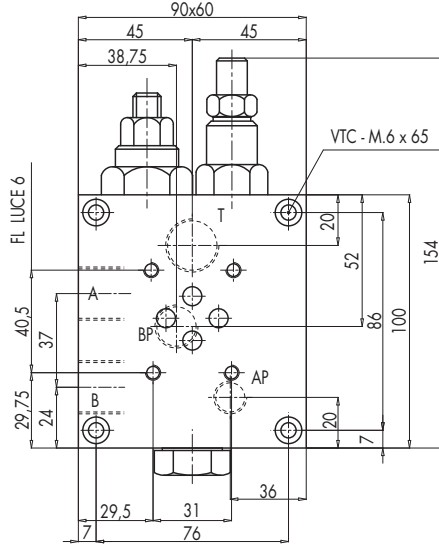
SIGLA  
TYPE

PORTATA MAX  
MAX FLOW  
Lt./min

PRESSIONE MAX  
MAX PRESSURE  
Bar

CODICE CODE	SIGLA TYPE	AP	BP	T	PRESSIONE MAX MAX PRESSURE Bar
V0518	VABP FL 6	15	30	40	350
V0515	VABP FL 10	20	45	60	350
V0516	VABP FL 16	35	80	100	350

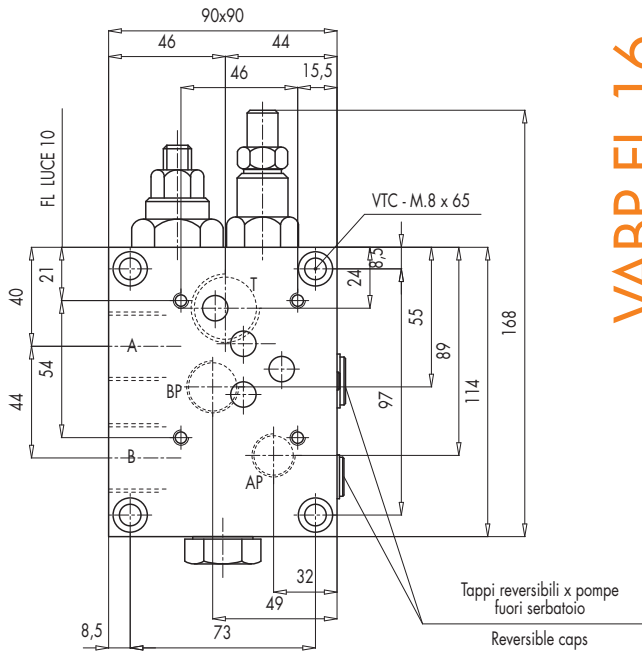
## VABP FL 6



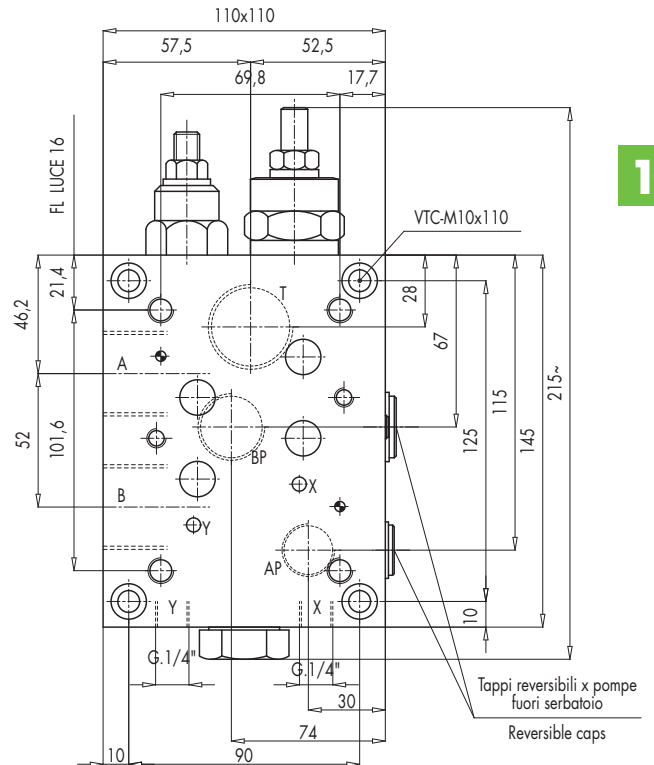
### MOLLE STANDARD • STANDARD SPRINGS

VALVOLA VALVE	BP (bar)	AP (bar)
VABP FL 6	20 - 80	50 - 350
VABP FL 10	20 - 80	50 - 350
VABP FL 16	20 - 80	50 - 330

## VABP FL 10



## VABP FL 16



10

CODICE  
CODE

SIGLA  
TYPE

A

B

T

AP

BP

PESO  
WEIGHT

CODICE CODE	SIGLA TYPE	A	B	T	AP	BP	PESO WEIGHT
V0518	VABP FL 6	G 1/2"	G 1/2"	G 1/2"	G 1/4"	G 3/8"	3,00
V0515	VABP FL 10	G 3/4"	G 3/4"	G 3/4"	G 3/8"	G 1/2"	5,00
V0516	VABP FL 16	G 1"	G 1"	G 1"	G 1/2"	G 3/4"	9,82