



## 3/2 WAY DIRECTIONAL VALVES KVC

- NG 10
- Up to 350 bar [5 076 PSI]
- Up to 100 L/min [26.4 GPM]

- Direct in-line mounting.
- Plug-in connector for solenoids to ISO 4400.
- Threaded connections to ISO 9974 (Metric), ISO 1179 (BSPP/Gas), ISO 11926 (UNF).
- Protection of solenoid IP65 to EN 50529 / IEC 60529.



KVC-3/2-10

### Operation

Directional valves type KVC-3/2-10 with direct solenoid operation are used to control the direction of hydraulic fluid flow. Type KVC-3/2-10 is a reduced version of type KV-6/2. It is used for alternate control of two one-pipe working units (e.g. Plunger) with common, main directional valve.

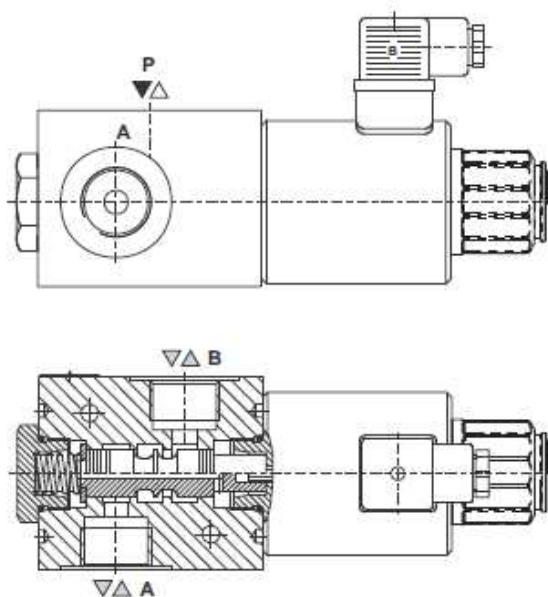
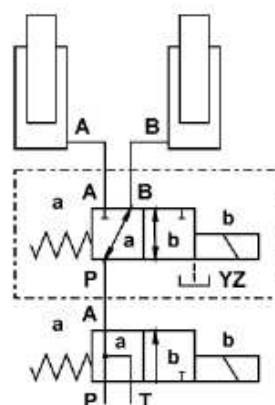
It is also very proper as bypass valve.

The change-over can also be done manually by pressing the emergency manual override.

### Hydraulic symbol



### Mounting example



Mechanically operated

Hydraulically operated

Electrically operated

## Features

<b>Hydraulic</b>		
Size		10
Flow rate	Without drainage	L/min [GPM]
		60 [15.8]
Operating pressure	Without drainage	bar [PSI]
		250 [3 625]
Oil temperature range	°C [°F]	-20 to +70 [-4 to +158]
Viscosity range	mm <sup>2</sup> /s [SUS]	15 to 380 [3.24 to 82]
Mounting position		Optional
Mass	Without drainage	kg [lb]
		5,6 [12.34]
Filtration	NAS 1638	8
<b>Electrical</b>		
Supply voltage	V	12, 24 DC
Power	W	45
Switching frequency	1/h	15000
Ambient temperature	°C [°F]	to +50 [to +122]
Coil temperature	°C [°F]	to +180 [to +356]
Duty cycle		Continuous

## Dimensions

