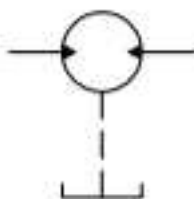


Symbol



**G = GAS**

Type for 4xØ9:  
20MR...X546F

Type	Displacement q [cm <sup>3</sup> ]	Pressure P <sub>max</sub> , [bar]	Speed n [min <sup>-1</sup> ]	Dimensions								
				A mm	B mm	Inlet			Outlet			
						E mm	F Inlet	d mm	E mm	G mm	d mm	
20MR6,3X546	6,3	200	650..3500	44	83±0,1	30	1 / 1/2"		30	M6	O / 1/2"	
20MR8,2X546	8,2	200	650..3500	45,5	85,9±0,1	M6						
20MR11X546	11	200	650..3500	48	91,1±0,1	40	1 / 2"		40	M8	1 / 2"	
20MR16X546	16	200	650..3500	52	98,6±0,1							
20MR19X546	19	180	650..2500	54	103,5±0,1							
20MR22X546	22	180	650..2500	57	108,5±0,1							
20MR25X546	25	160	650..2000	59,2	113,4±0,1							