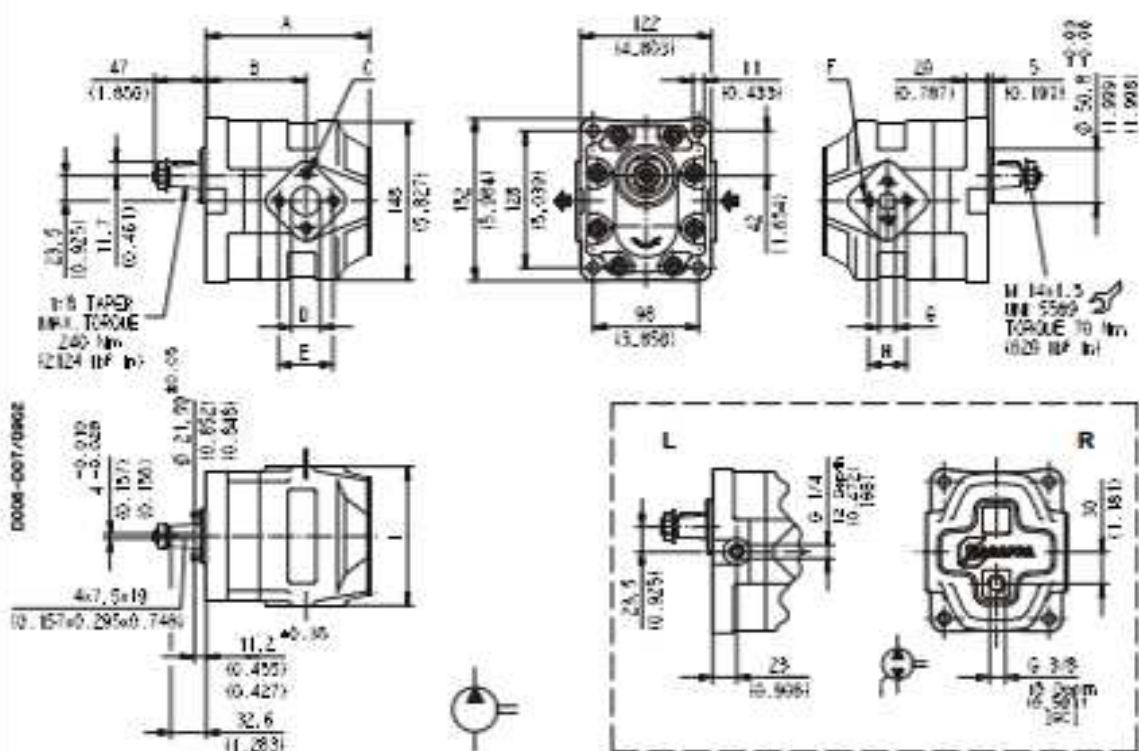


EUROPEAN FLANGED PORTS - 4 Bolts
Metric thread ISO 50° conforms to ISO/R 262

Replaces: 01.01.02



02/09_02

Pump type	A	B	C	D	E	F	G	H	I
	mm (in)	mm (in)	mm (in)	mm (in)	mm (in)	mm (in)	mm (in)	mm (in)	mm (in)
ZRP-HOX32-27	133 (5.236)	85 (3.346)							
ZRP-HOX32-38 S D L R B	138 (5.433)	90 (3.543)							
	141 (5.551)	93 (3.661)							
	144 (5.669)	96 (3.780)	M 10 Depth 17 (0.669)	27 (1.063)	51 (2.008)	M 8 Depth 17 (0.669)	19 (0.748)	40 (1.575)	130 (5.118)
	149 (5.866)	93 (3.661)							
	152 (5.984)	97 (3.819)							
	155 (6.102)	100 (3.937)							
0-83 E3-L EF/ED-N	163 (6.417)	108 (4.252)	M 12 Depth 17 (0.669)	33 (1.299)	62 (2.441)	M 10 Depth 17 (0.669)	27 (1.063)	51 (2.008)	135 (5.315)

Rotator: S=left - D=right - L=reversible side drain - R=reversible rear drain - B=reversible internal drain

How to order:

KP 30-27 S0-83 E3-L ED/EB-N